

How to Connect to the Network via RDP

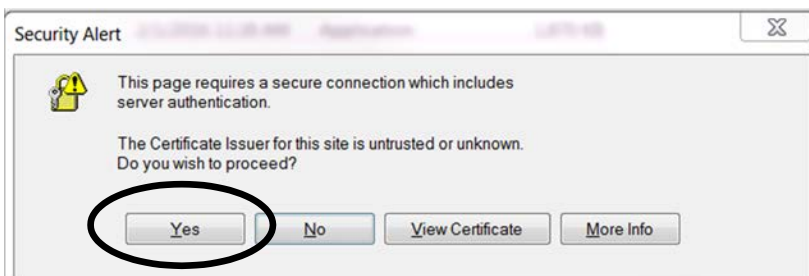
- Click on the icon for **WatchGuard Mobile VPN**:



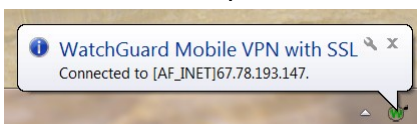
- Double click this icon and you will see the VPN login box:



- Ensure that the **Server** box shows **vpn.elcpinellas.net** or **97.78.142.214**
- Enter your regular network **Username and Password**.
- Then click **Connect**.
- You may see a Security Alert screen like this:



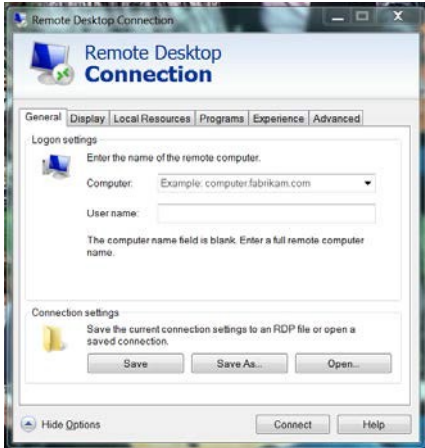
- If you do receive the **Security Alert** screen click **Yes**.
- When you are successfully connected to the VPN you will see this message in the lower right-hand corner of your screen:



- Next click on the **Remote Desktop** icon:



- Click Show Options in the lower left hand corner to expand the box.:



- Enter the **ELC-RDS-SRV02** in the Computer field
- Enter your Network Username preceded by elcpinellas\
(example – elcpinellas\pmcavoy)
- Click on Save to retain the settings for future logins.

- When you click **Connect** you will see this login box:



- Log in using your regular network username and password.
- You will see the RDP screen with a blue background.
- **When you are finished log off your remote session by going to Start – Sign Out *It is important that you log off the remote session as it will continue running on the server and may cause problems when you try to log back on.***