

## Contracts Department: Voluntary Prekindergarten



The VPK team is currently reviewing and approving VPK applications and contracts for the 2021-2022 Program Year.

The first day of school for Pinellas County Schools is August 11, 2021. VPK Providers wishing to start at the same time, must have their application submitted before July 23, 2021, in order to allow time to review credentials, documentation and complete the contract process.

Applications received after that time are not guaranteed to be **contracted prior to August 11, 2021**. Applications and Contracts are being processed in the order in which they are received.

**PLEASE NOTE:** VPK Providers wishing to receive the **ADVANCE PAYMENT OPTION, MUST** have their application approved, and contract certified prior to the end of July. **Any contracts certified after July 31, 2021, will NOT be eligible to request the advance payment option.**



Please read all instructions to application process carefully before submitting. We are receiving a large number of applications arriving with errors. All applications that come back with errors are rejected until necessary changes are made, which requires us to spend additional time in the application process. **Don't forget to create a separate calendar for each class.**

Also, in order to ensure all programs have the appropriate and updated form in their file, a new **Attestation of Good Moral Character** is needed for all VPK staff with this year's application.



## Do you have E-Verify Questions?

We are still hearing questions regarding the E-Verify requirement for providers contracting with the state.

A FAQ sheet on our website is available to provide additional information. It is located in the Resources section on the For Provider page. The E-Verify Affidavit completed prior to contracting is not the final step in the process.

## Contracts Department: School Readiness

We want to thank all the providers for their responsiveness in completing the SR Contracting for 2021-2022.

Please remember, providers contracted for SR have the option to select 12 paid holidays for this 21-22 contract year.

During contracting, it was observed that a number of providers did not elect 12 paid holidays. **Paid holidays must be requested prior to the expected date of closure by adjusting the closure calendar and paid**

All contracted providers must register and utilize the E-Verify system to confirm the work eligibility of all new staff hired after January 1, 2021. The affidavit is a provider's sworn statement that they are following the law and meeting their contractual requirements for screening, as outlined in the affidavit.

Registration process for E-Verify is not complete if you do not have your printed MOU in hand. The steps of the enrollment process with definitions and explanations are provided on the E-Verify site [HERE](#).

holiday schedule in your profile.

A change in paid holidays requires an amendment to the contract. Please allow a week for processing amendments. Paid Holidays cannot be accepted or processed after the closure date, so all requests for changes MUST occur prior to the expected date.

## Professional Development opportunities offered this fall:

- 1. Courageous Conversations: (4 hrs)** These sessions will guide participants through the barriers to the strategies to overcome fears about speaking honestly and authentically about racial bias.
- 2. Raising Quality through Intentional Interactions (RQII)– Infant/Toddler or Preschool: (20 hrs)** This interactive training uses the CLASS tool as a lens to explore specific elements of intentional interactions that enhance children's social, emotional, cognitive, and language development.
- 3. Social Thinking: (4 hrs )** This training investigates the competencies of social awareness that lie beneath the ability to be socially fluent, to know instinctively what to do in simple social situations. In the past, most of us developed these underlying executive functions and capacities for perspective taking as a natural part of growing up in a society. Often, today's child is not equipped with social sense to guide common expected social moves.
- 4. Curriculum Component Training Part One: (4 hrs)** Are designed to familiarize practitioners with the unique components of their program's selected curriculum and supports:
  - Beyond Cribs & Rattles/Beyond Centers & Circle Time
  - Creative Curriculum

## Screening and Intervention

Congratulations to our final Tuesday's with Tucker and Super STARS cohorts!!!



Tuesday's with Tucker  
(left to right; top to bottom):

- Victory Child Development Center
- Skycrest Child Development Center
- LaPetit Academy
- Kids Zone Academy

- HighScope

h

## Quality Programs

**Provider Services** excited to offer a range of programs to support early learning providers' and teachers' quality and professional development in the 2021-2022 year!

In order to participate, please complete the attached application, [HERE](#), and return to Camille Mendez at [cmendez@elcpinellas.org](mailto:cmendez@elcpinellas.org).

We are happy to help!  
If you have any questions, please contact Sharon Dennany at [sdennanay@elcpinellas.org](mailto:sdennanay@elcpinellas.org).  
**Spots fill up quickly, so don't wait!**

## Family Services Team

**We would love to chat with you!**  
Our live Chat is available for customer assistance on our website Monday through Friday from 8:00 – 5:00 pm  
[CLICK HERE](#)



Super STARS (left to right; top to bottom):

- Plato Academy Seminole
- Creative Learning Center
- Little Peoples Place
- Trinity Presbyterian Preschool

### \*\*REMINDER\*\*

Please check your Provider Portal at least weekly for ASQ Screenings that are due to be completed for New Enrollments and Children who have just completed Re-Determination.  
(See Directions below)

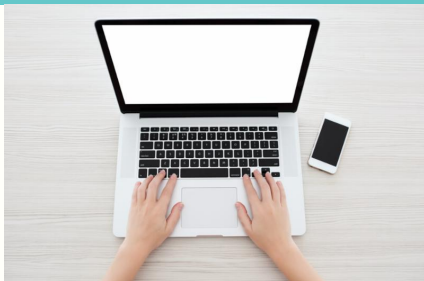
### Provider Portal website

[Click here](#)

### Login

Navigate to Enrollments ->  
Manage SR Enrollments ->  
Preschool Development ->  
Developmental Screening ->  
Incomplete

## Join us for NapTime News!



Are you looking for ways to connect with other child care educators in Pinellas County?  
**Be a part of our child care community discussions on Facebook each Friday at 1:30pm.**  
Not a member yet? Connect with us.

**SELECT HERE TO  
CONNECT**



Sponsorship by the Early Learning Coalition  
of Pinellas County, Inc. and the State of Florida,  
Division of Early Learning, 70% Federal Funds

[WWW.ELCPINELLAS.ORG](http://WWW.ELCPINELLAS.ORG)

