

EARLY LEARNING COALITION OF PINELLAS COUNTY

SERVICE DELIVERY MODEL RECOMMENDATION



April 8, 2010

Background

- Coalitions were created per Chapter 411 to design, operate and manage the School Readiness program. (VPK was added later)
- Coalitions are required to submit a 3-year plan to the funding agency, AWI, clearly outlining the service delivery plans.
- AWI (funder) is responsible for monitoring each Coalition to determine compliance with their own Plan.

Background

- Coalitions may choose to contract out/out source all services.
- Coalitions may provide all services in-house.
- Coalitions may chose a combination of the above.

Coalition Comparison

- 14 provide all services in-house
- 7 contract out most services
- 10 do a little of both

31 Unique Models



Background

The Coalition is accountable for the compliance and effectiveness of all services regardless of the service delivery model.

April 8, 2010

Current Service Delivery Model

Early Learning Coalition

Direct Services

- Professional Development
- VPK Provider Certification
- Inclusion – Warm Line
- Program for Inclusive Early Care and Education
- Developmental Screening – Referral
- VPK Provider Certification & Assessment

Pinellas County Schools

- Florida First Start - Quality

Pinellas County Health Department

- Screening Eyes and Ears of Kids (S.E.E.K.) - Quality

Coordinated Child Care of Pinellas

- SR Provider Certification & Compliance
- Quality Counts
- Infant Toddler Program
- Developmental Screening
- Child Eligibility
Child Care Resource & Referral
Provider Reimbursement

Pinellas Public Library Cooperative

- Born to Read

April 8, 2010

Current Coalition Staffing

Administration	Direct Services
6 FTE	7 FTE

*All FTEs were established with Board approval.

April 8, 2010

Core Services

- Child Eligibility
- Waitlist Management
- Provider Reimbursement
- Child Care Resource & Referral
- IT Support (Primarily EFS database)

All services are currently provided by CCC.

Quality Services

- Quality Counts (CCC)
- Infant Toddler Program (CCC)
- School Readiness Provider Certification & Compliance (CCC)
- Developmental Screening (CCC/ELC)
- VPK Provider Certification & Compliance (ELC)
- Professional Development (ELC)
- Florida First Start (PCSB)
- Born to Read (PPLC)
- SEEK (PinHD)

April 8, 2010

Service Delivery Options

NOT RECOMMENDED

- Negotiate contract for all services.
(Excludes Developmental Screening).
- Transition all services in-house.

Service Delivery Options

RECOMMENDED OPTION

3. Negotiate contract for Core Services only.
Transition Quality Services in-house* July 1, 2010.

Professional Development	Child Progress	Program Assessment
<ul style="list-style-type: none">● Training● Quality Counts● Infant Toddler Program	<ul style="list-style-type: none">● Developmental Screening● Intervention Services● Pre-Post Assessment	<ul style="list-style-type: none">● SR Provider Certification● SR Program Assessment● VPK Provider Certification

*Excludes: Florida First Start, SEEK, Born to Read

April 8, 2010

Rationale

1. Preserves one-stop shopping for families.
2. Provides unified system for provider support services.
3. Quality Assurance
4. AWI Early Learning Partnership Initiatives
5. Maintains and enhances existing quality at reduced cost.

Rationale cont...

6. Cost Efficiencies

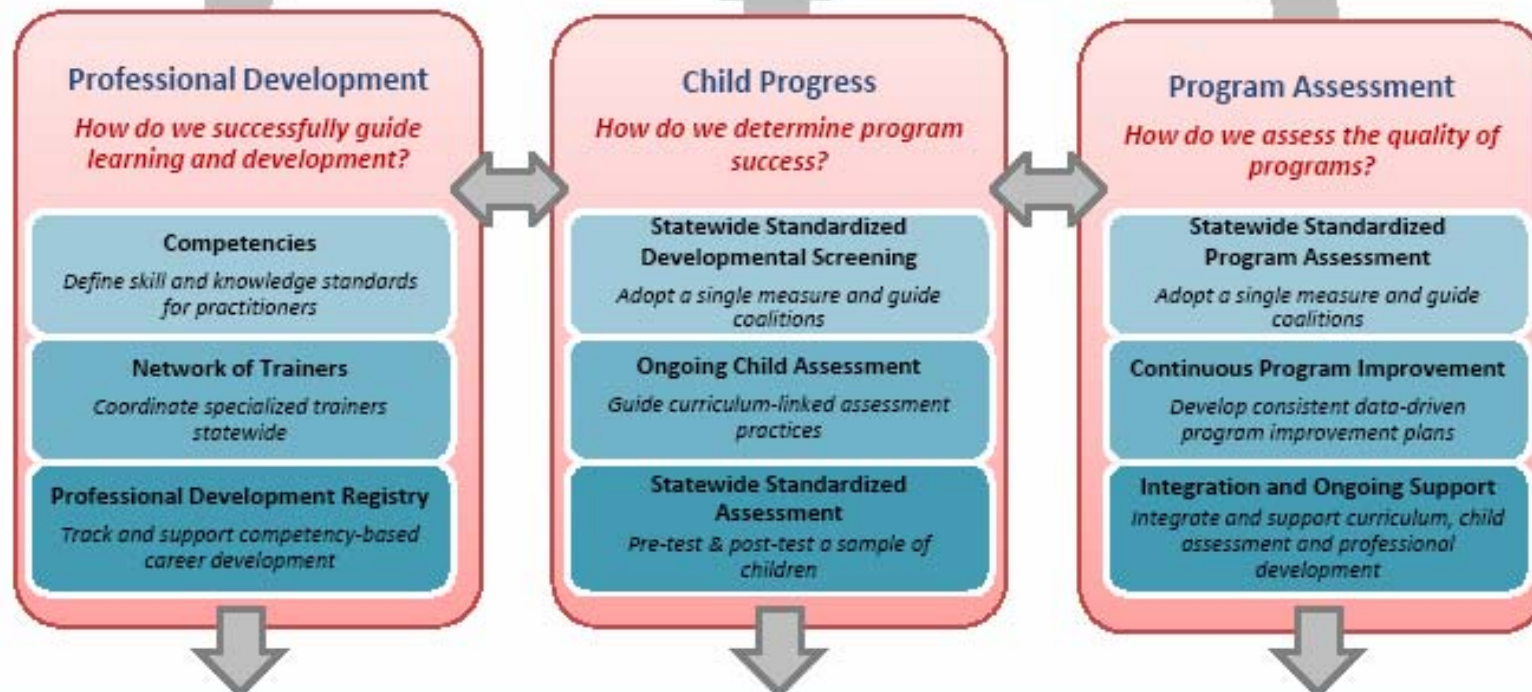
- Utilize existing ELC senior management
- Minimize mid-management level
- Utilization of contracted workforce where possible
- Cross-train staff to maximize efficiencies
- CCC significantly reduces admin & non-direct costs.

Serves approximately 440 additional
School Readiness Children.



Early Learning Partners Initiative

Building Strong Sustainable Programs



Early Learning Information System (ELIS)



Note: Projects described here are funded through Federal ARRA funds.

February 3, 2010

Professional Development

New ELC Services

- Realignment of services in accordance with AWI Early Learning Partnership Initiative
- Quality Counts
- Infant Toddler Program

Existing ELC Services

- Training
- CEU Administration
- Step-Up Scholarships

April 8, 2010

Developmental Services

New ELC Services

- Developmental Screening- Administration
- Intervention Services
- *Pre-Post Assessment*

Existing ELC Services

- Developmental Screening Referral-Navigator

Program Assessment

New ELC Services

- School Readiness Provider Certification
- School Readiness Provider Monitoring
- School Readiness Program Assessment
 - Details to be determined by AWI

Existing ELC Services

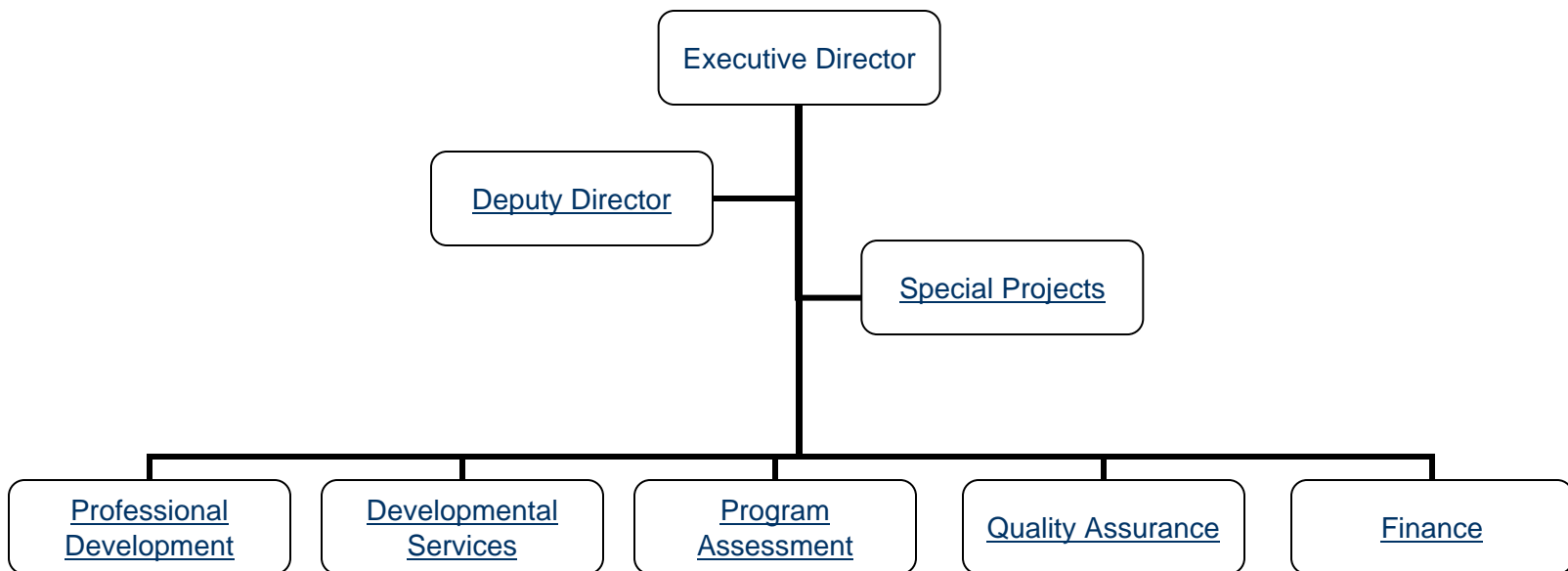
- VPK Provider Certification & Monitoring

Quality Assurance Plan

- Quality Assurance Components
 - Results Accountability methodology
 - Based on the work of H. Daniels Duncan, Mark Friedman and the Results Leadership Group
 - Identifies target populations
 - Begins where you want the populations to “end up” and uses continuous improvement of the processes and measurement to achieve the desired results.
 - Agency for Workforce Innovation requirements in addition to federal and state statutes, local policy and the Coalition Plan

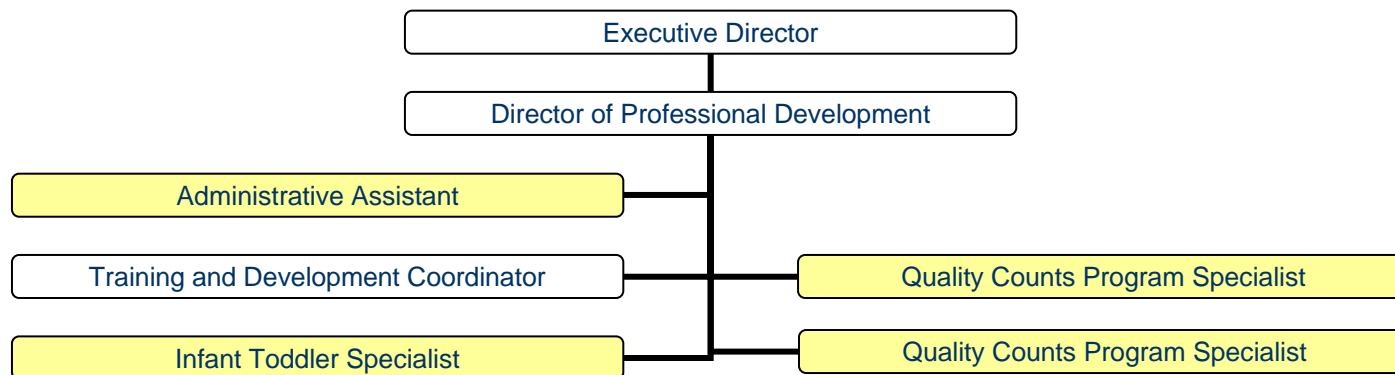
April 8, 2010

Department Organization



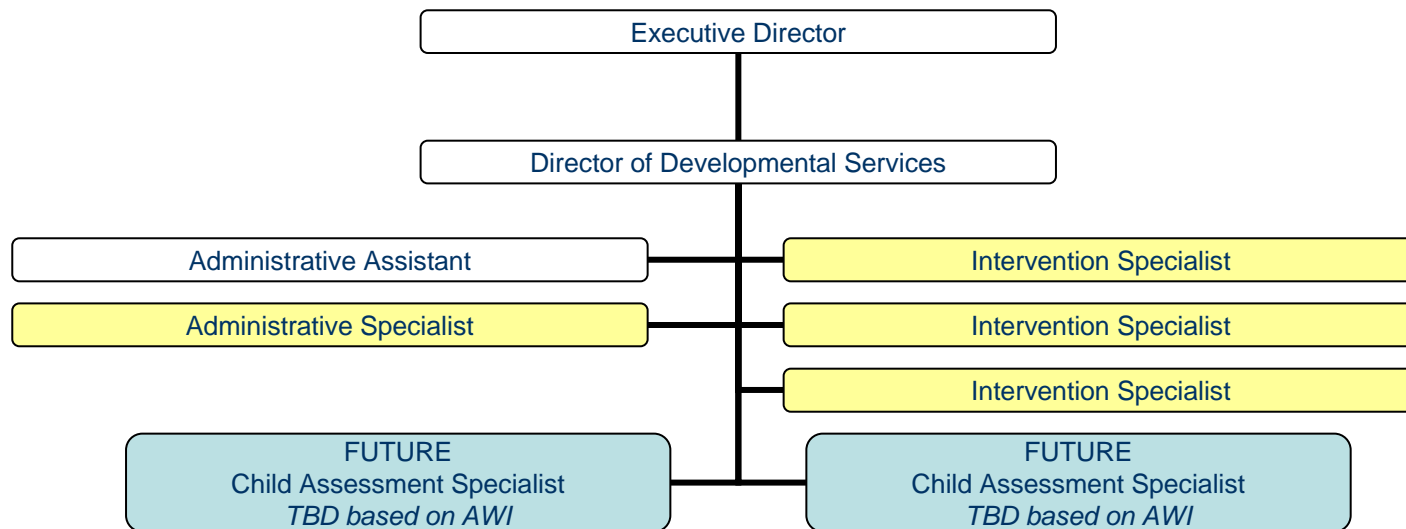
April 8, 2010

Professional Development Department



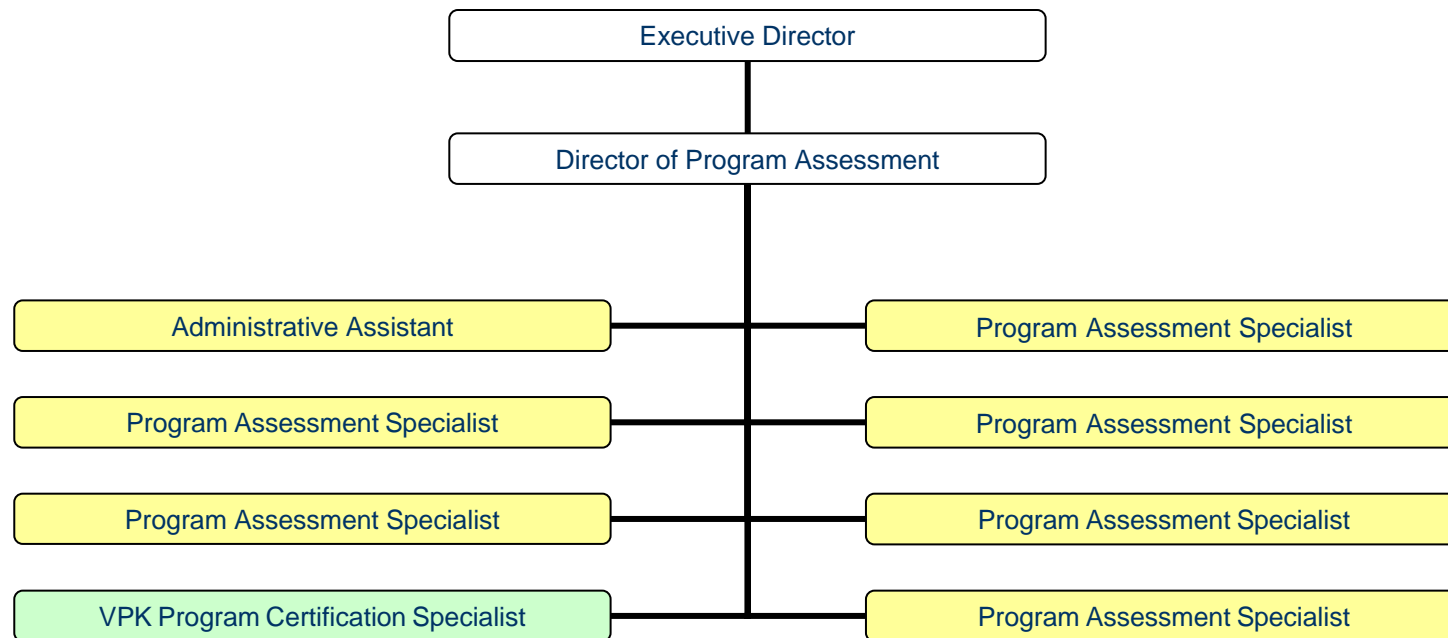
April 8, 2010

Developmental Services Department



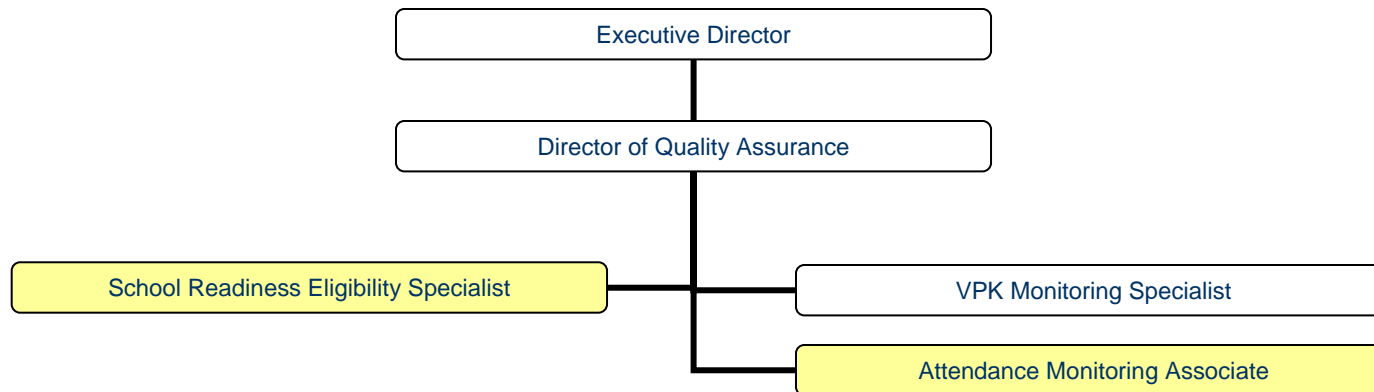
April 8, 2010

Program Assessment Department



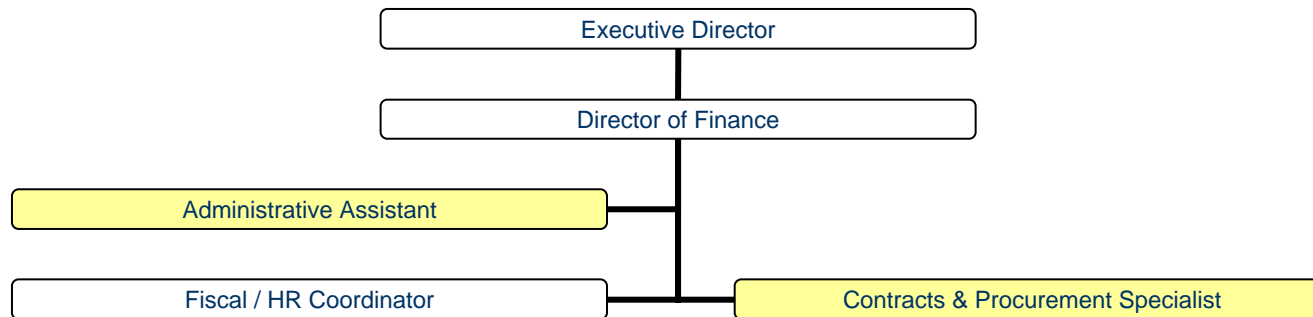
April 8, 2010

Quality Assurance Department



April 8, 2010

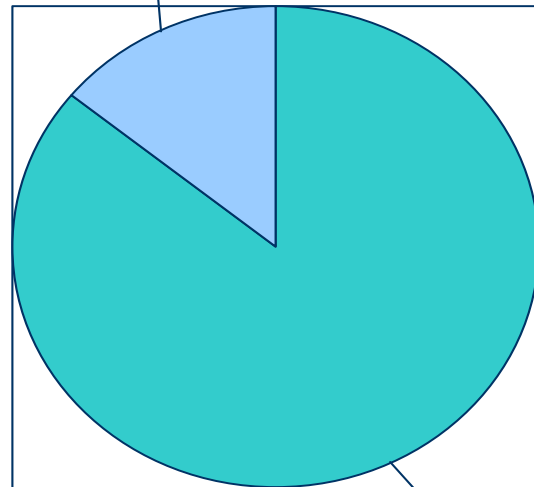
Finance Department



April 8, 2010

Proposed FY 2010-2011 Budget Summary SR & VPK

\$6,763,891



\$38,340,768

■ Direct Child Care (Slots) 85.82%

■ Other* 14.18%

*Other

Administration	4.34%
Eligibility & Support	4.91%
Quality Services	4.93%

April 8, 2010

Transition Expenses

- Phone System \$20,000
- Computer Equipment \$15,000
- Furniture \$14,500

April 8, 2010

Facility Expansion

Location: 5675 Rio Vista Dr. Clearwater
Lease: 69 Months
Square Feet: 4,570
Price: Year 1 \$5.20/ft Common Area \$4.22/ft
 Remaining \$10.40/ft Common Area \$4.22/ft
Accommodations: 5 Offices (1 furnished)
 16 Work Stations cubes (12 included)
 1 Conf Room (furnished)
 1 Resource Room

April 8, 2010

Transition Timeline

Tentative Timeline

- April/May 2010 Advertise ELC Positions*
Conduct Interviews and Select Applicants
- July 1, 2010 Execute 1 year contract with CCC for Core Services
- July 1, 2010 Extend Current Contract through October 1, 2010 if necessary
- July 2010 Transition Designated Quality Services to ELC
- July 2010 Access to new office space

*New positions will be opened to CCC staff before the general public.

April 8, 2010